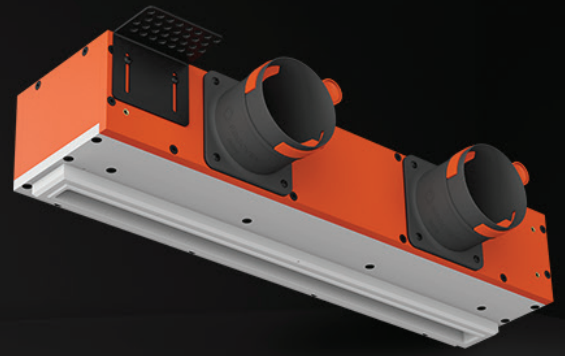
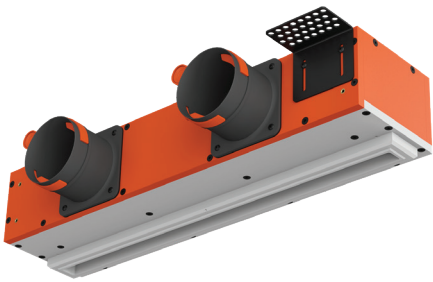


LINEO

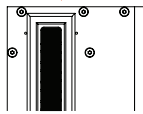
Hidden ventilation diffusers for ceilings & walls



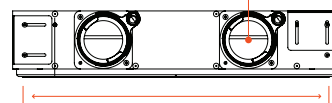
SINGLE 500 model diffuser is designed for plasterboard ceilings / walls, connecting to a 75 mm flexible duct system, contains a balancing valve & needs only 12 cm for installation.



20 mm

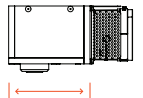


✓ 75 mm connectors

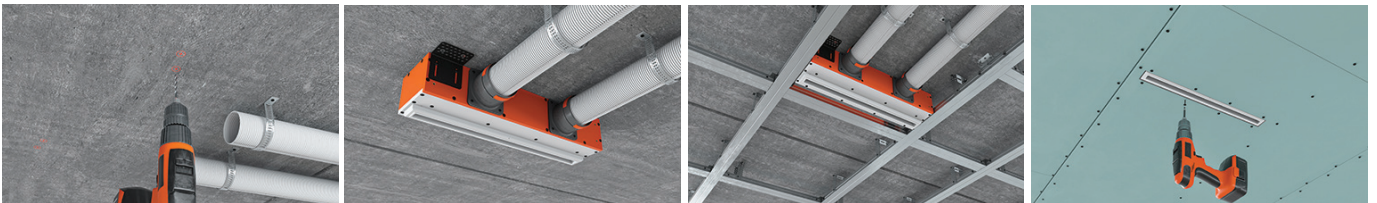


500 mm

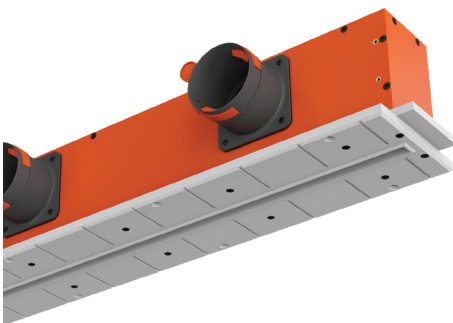
110 mm



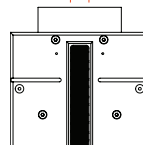
135 mm



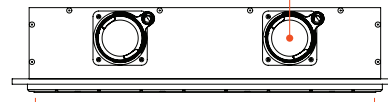
PROFILE 600 model diffuser is designed for plasterboard ceilings / walls, connecting to a 75 mm flexible duct system, contains a balancing valve. The design is compact, requiring just 17 cm of installation depth.



20 mm

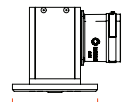


✓ 75 mm connectors

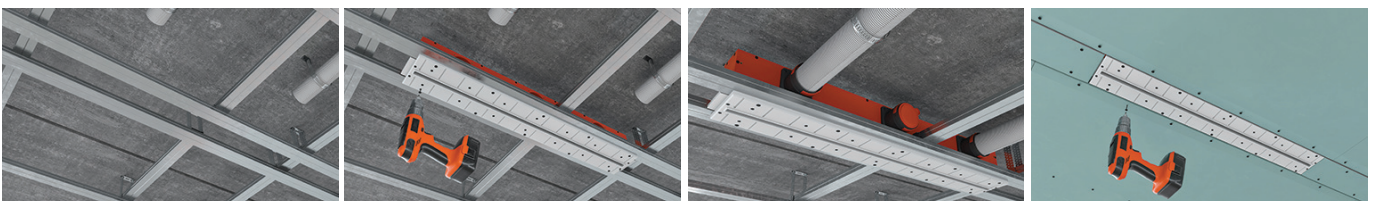


600 mm

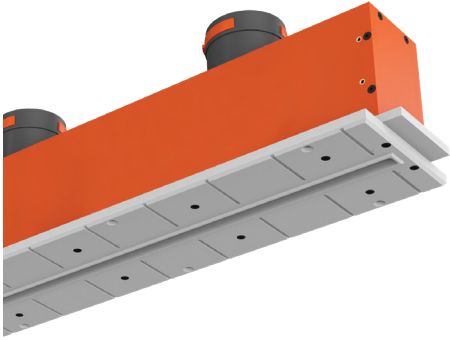
150 mm



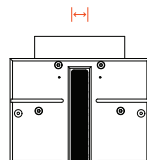
150 mm



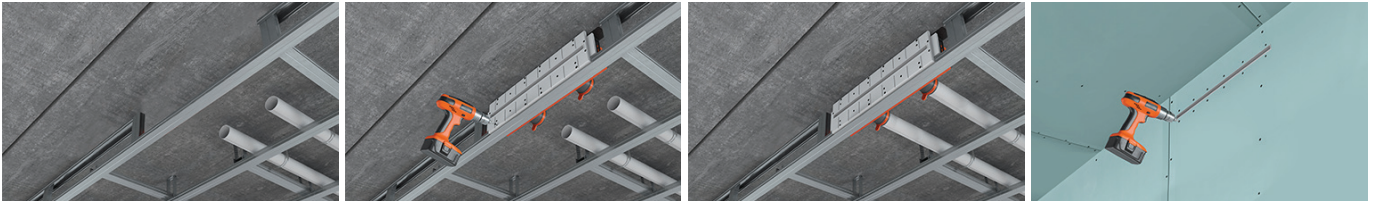
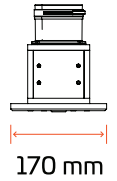
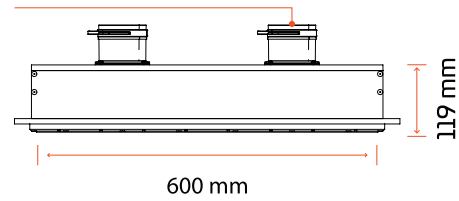
PROFILE 600 VERTICAL model diffuser is specifically designed for installation on the "face" of the plasterboard ceiling. It connects to a flexible 75 mm plastic duct system and requires only 17 cm of space for installation.



20 mm



✓ 75 mm connectors



A position of the balancing valve is determined by using a damper balancing stick**:

- ✓ Insert the damper balancing stick through diffuser's grill until it rests against the balancing valve.
- ✓ The readings are determined by the ceiling line.
- ✓ The valve positions are indicated on the stick.

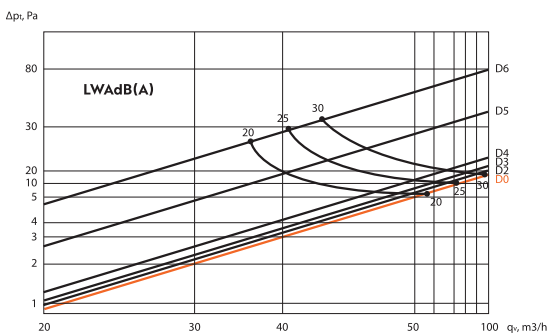
** Balancing flap position rod is included with the diffuser.

D7
D6
D5
D4
D3
D2
D1
D0

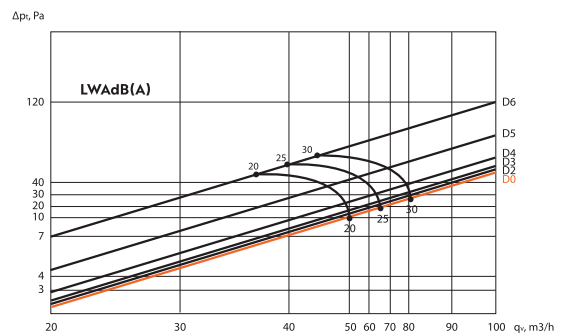


D0 – the damper is full opened.
D7 – the damper is maximum closed.

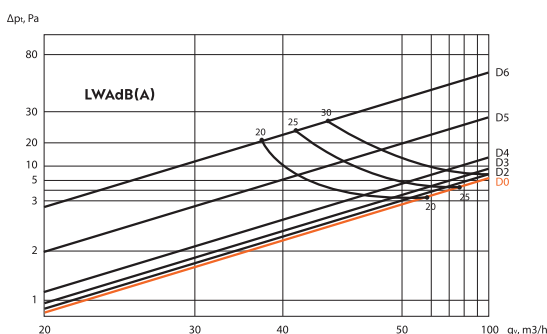
LINEO 500, 20 mm slot (supply air)



LINEO 500, 20 mm slot (extract air)



LINEO 600, 20 mm slot (supply air)



LINEO 600, 20 mm slot (extract air)

